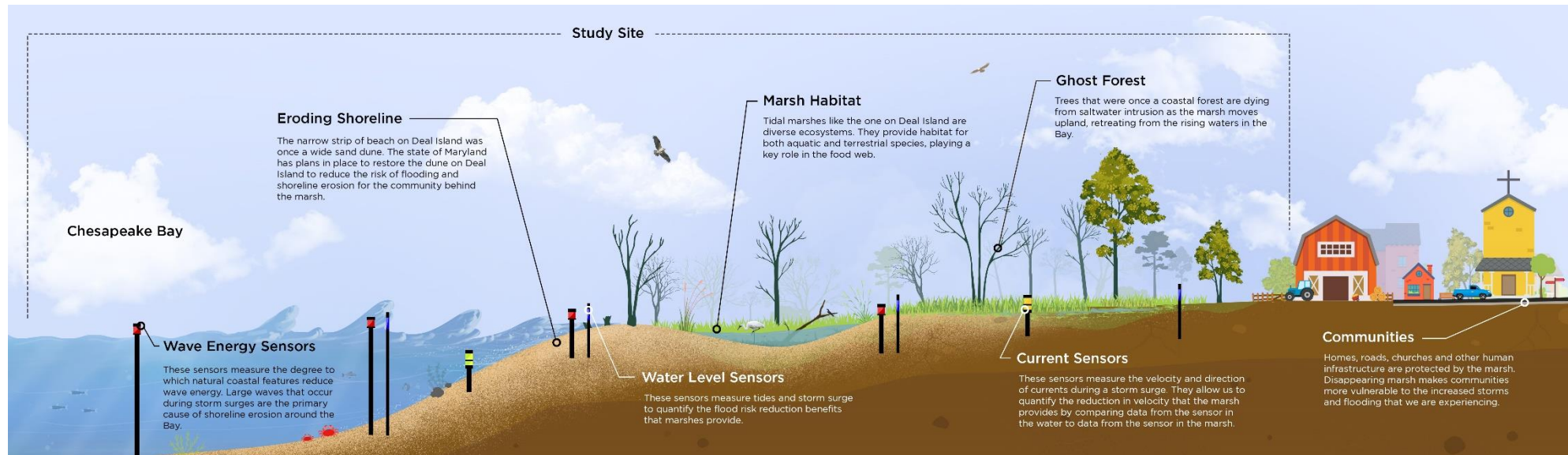




Resiliency through
Restoration Initiative

Long-term Goals

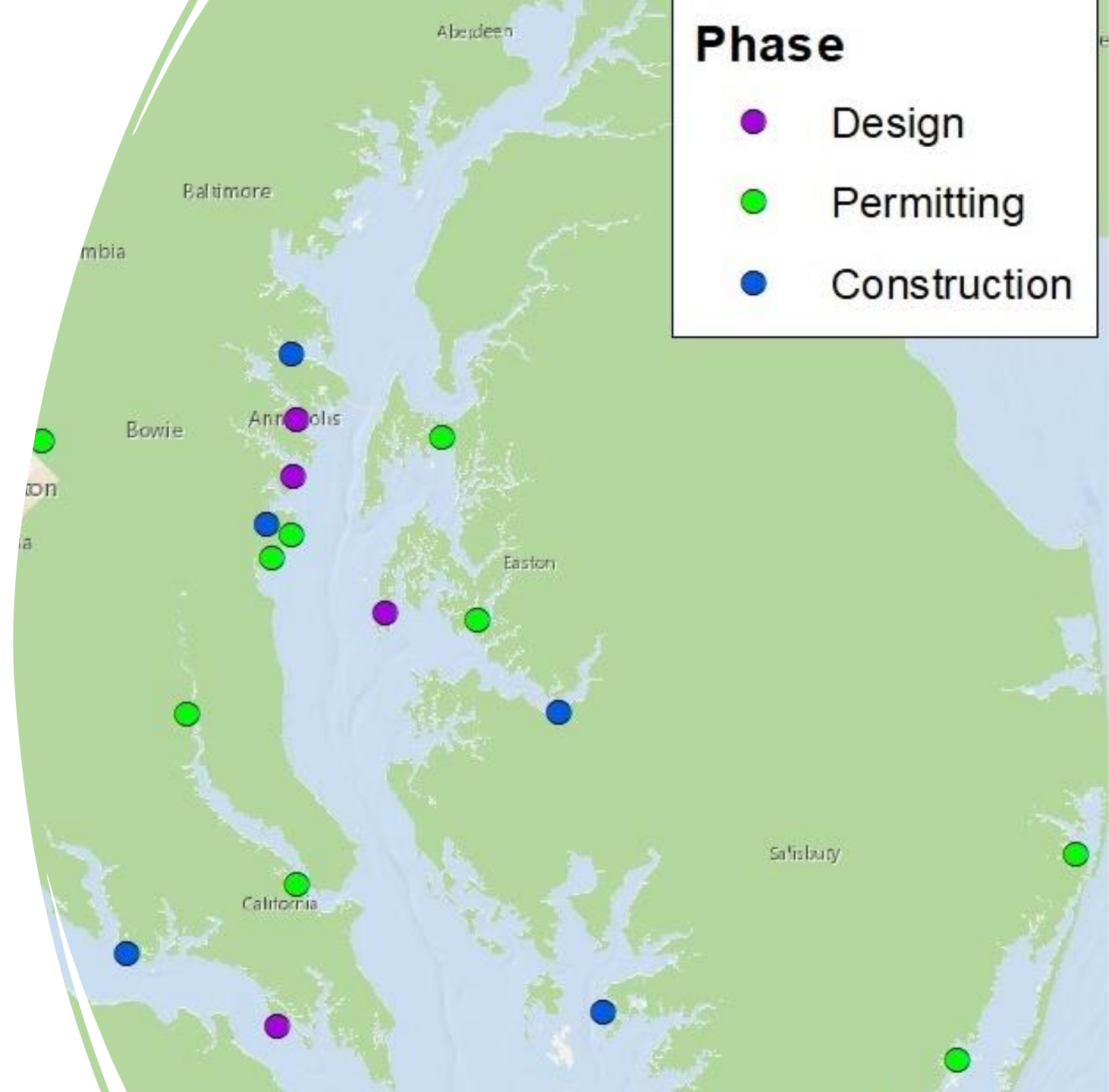
- Reduce Maryland's vulnerabilities to climate change impacts and enhance resiliency of local economies
- Improve understanding of the community benefits of natural solutions through state and community-led monitoring and ecosystem service evaluation
- Elevate the use of and understanding of where nature-based practices are feasible and practical
- Demonstrate and encourage public-private partnerships to support future private funding investments



Ecological Effects of Sea Level Rise: <https://www.nature.org/MDEESLRstudy>

Short-term Goal

Demonstrate how natural and nature-based features can help enhance community resilience to the impacts of climate change.



Project Solicitation

- **Who:** Local governments or non-profits (registered, in compliance, and in good standing with the Maryland Secretary of State)
- **What:** Nature-based restoration projects
- **Where:** Maryland communities impacted by coastal or stormwater/inland flooding
- **When:** July – December 15, 2021
- **Why:** Enhance resilience to climate change impacts (*water quantity*)
- **How:** Design (up to \$100K), Construction, or Design-Build

Outcome 3

Utilize natural and nature-based infrastructure to enhance resilience to climate change.

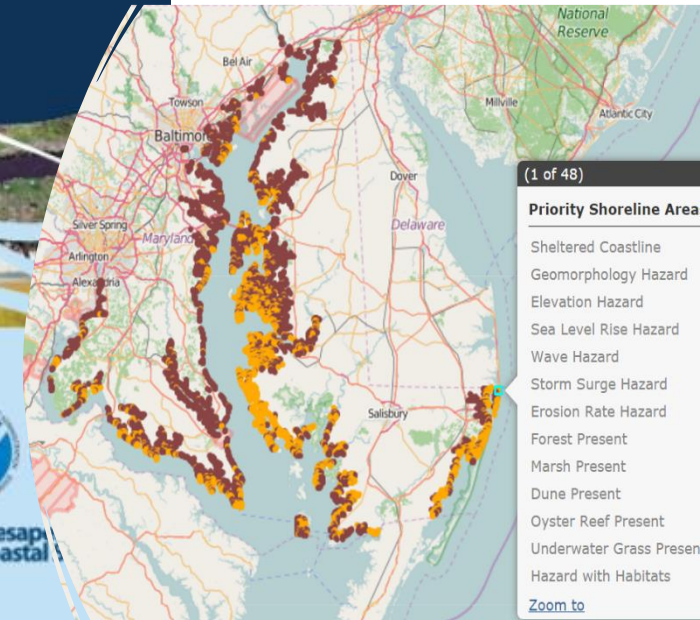
Maryland Department of Natural Resources'
Chesapeake and Coastal
Grants Gateway
FY22 PROPOSAL SOLICITATION

The Chesapeake and Coastal Grants Gateway provides a one-stop location for communities seeking technical and financial support for projects that foster healthy ecosystems, communities, and economies that are resilient in the face of change.

MARYLAND
NOAA
MARYLAND DEPARTMENT OF NATURAL RESOURCES
Chesapeake Coastal

Coastal Resiliency
Assessment

[dnr.maryland.gov/ccs/
coastalatlus/](https://dnr.maryland.gov/ccs/coastalatlus/)

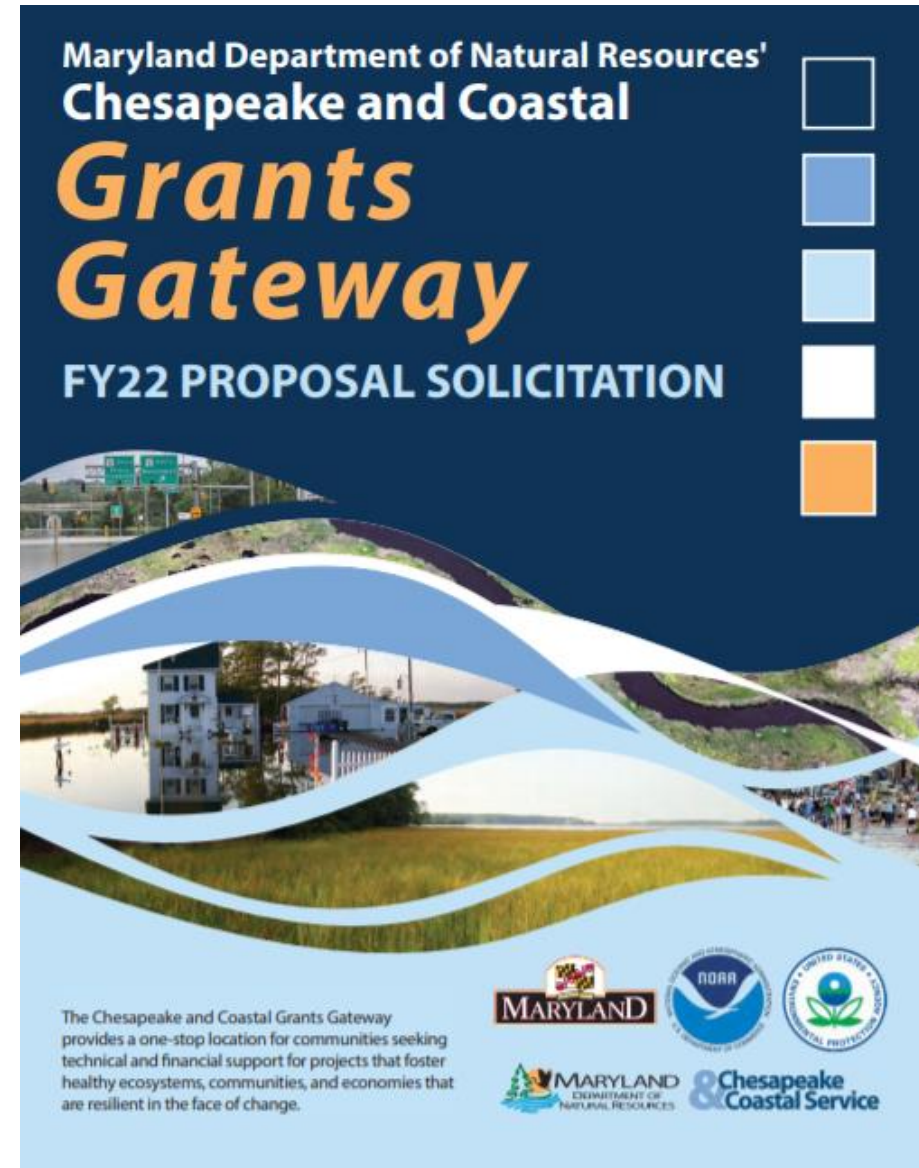


Review Criteria

- Coastal Exposure Reduction
- Ecological Enhancement
- Cost Efficiency
- Adaptation Potential
- Local Capacity for Implementation
- Demonstration Value
- Social Benefits and Equity
- Proposal Completeness

Outcome 3

Utilize natural and nature-based infrastructure to enhance resilience to climate change.



Maryland Department of Natural Resources'
Chesapeake and Coastal
Grants Gateway
FY22 PROPOSAL SOLICITATION

The Chesapeake and Coastal Grants Gateway provides a one-stop location for communities seeking technical and financial support for projects that foster healthy ecosystems, communities, and economies that are resilient in the face of change.

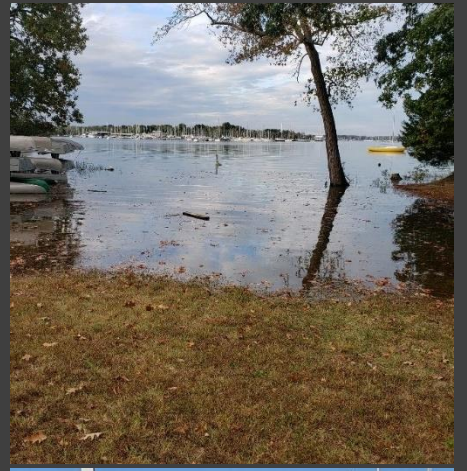
Logos for MARYLAND, NOAA, and the U.S. Environmental Protection Agency are displayed. The Chesapeake & Coastal Service logo is also present.

A vertical legend on the right side of the poster shows five colored squares: dark blue, medium blue, light blue, white, and orange.

Program Metrics



Project Proposals	+70
Ongoing Projects	22
Jurisdictions	10
Non-Profit Partners	10
County and Municipality Partners	7
State Capital Funds Allocated	\$15,280,000
Leveraged Federal Funds (NOAA)	\$144,203
Leveraged Federal Funds (NFWF)	\$1,437,736



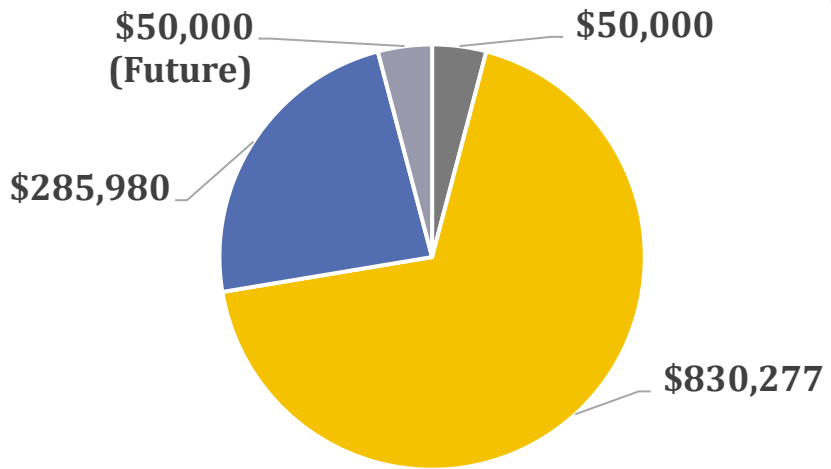
Project Spotlight:
**West River Methodist
Center (Anne Arundel
County)**

- Existing Degraded Bulkhead
- Turf Lawn with stormwater outfalls into West River
- High tide nuisance flooding
- Degraded habitat



Project Spotlight:
West River
Methodist Center

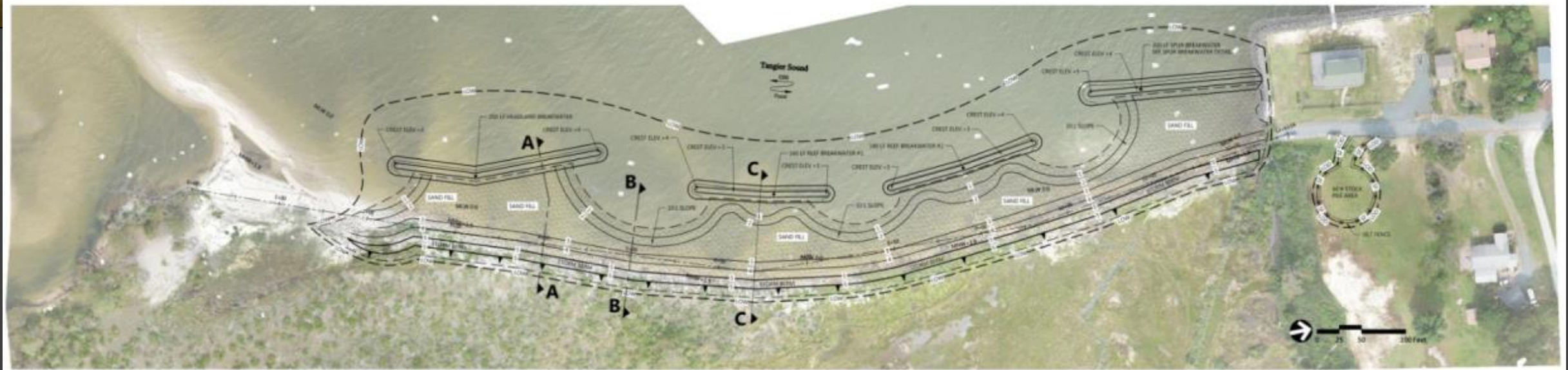
- 885 linear-foot (vegetated breakwater + cobble beach) living shoreline
- 430 linear-foot Regenerative Stormwater Conveyance (RSC) Wetland
- Bulkhead replacement



- Design (RtR)
- Construction (RtR)
- Construction (TF)
- Adaptive Management (RtR)

First Constructed Project!





Project Spotlight: Deal Island Peninsula

- 1,100 linear-foot (headland breakwater) living shoreline
- Dunes with high marsh and dune grass plantings
- Reef breakwaters with pocket beaches

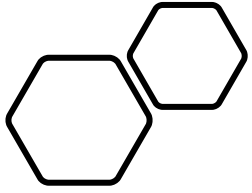


Deal Island Construction (Somerset County)



**Project Spotlight:
Low Impact Development
Center (Prince Georges
County)**

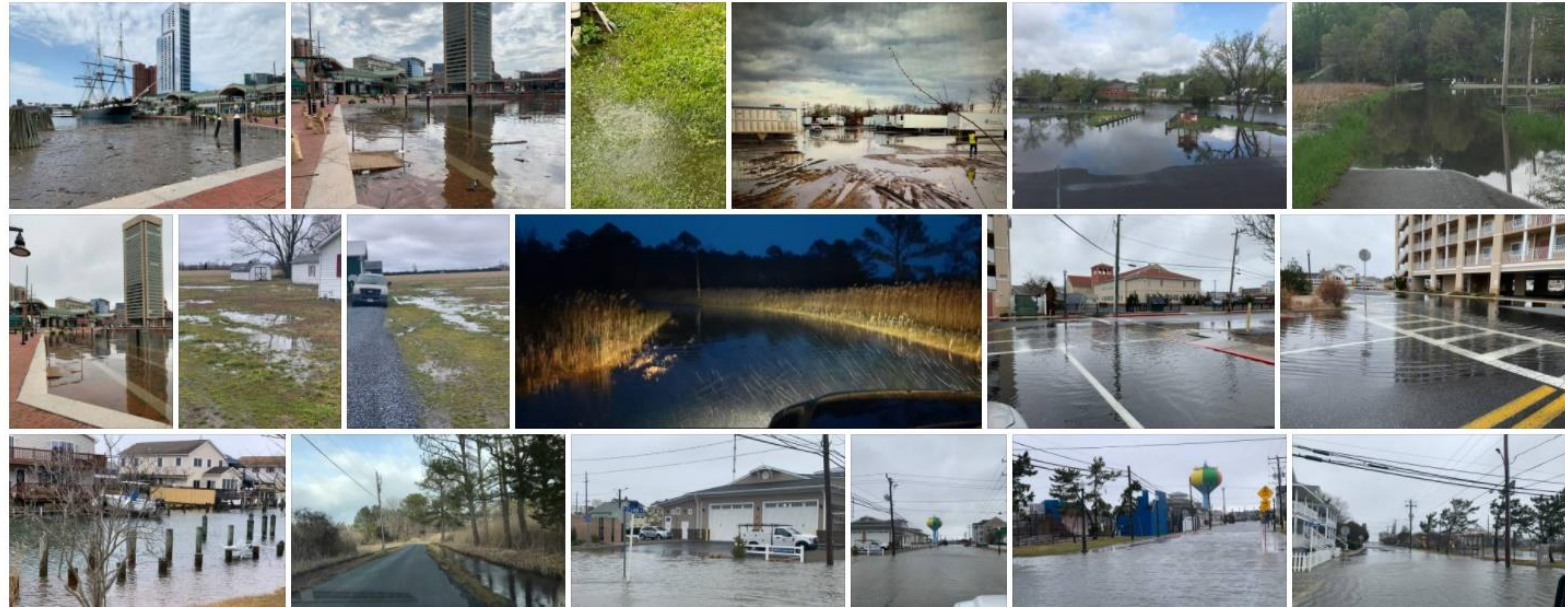
- Submerged Gravel Wetland (42nd Place, Hyattsville)
- City of Hyattsville Demonstration Site
- Lower Ward 1 Resilient Stormwater Planning Study
- Design Phase



Adaptive Management

The act of monitoring and adjusting a restoration practice in the face of changing and dynamic conditions

- Project Monitoring
- Community Science
- Maintenance



CONTACT

Nicole Carlozo
nicole.carlozo@maryland.gov
410-260-8726

Grants Gateway:
<https://dnr.maryland.gov/ccs/Pages/funding/grantsgateway.aspx>

Resiliency through Restoration:
<https://dnr.maryland.gov/ccs/Pages/Resiliency-through-Restoration.aspx>

